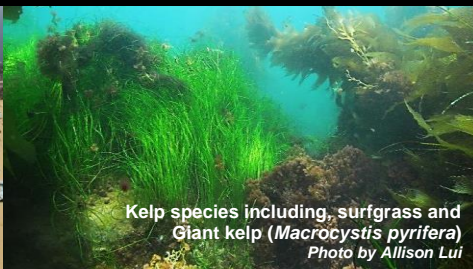


# Point Dume State Marine Reserve

Southern California Marine Protected Areas (MPAs), *Established January 2012*



Point Dume SMR  
Photo by Paulo Serpa



Kelp species including surfgrass and Giant kelp (*Macrocystis pyrifera*)  
Photo by Allison Lui



Juvenile Yelloweye rockfish (*Sebastes ruberrimus*)  
ROV Photo by MARE/CDFW

## Site Overview

Photos are representative of the South Coast Region and may not be within this MPA.

### What is an MPA?

MPAs are a type of [marine managed area](#) (MMA) where marine or estuarine waters are set aside primarily to protect or conserve marine life and associated habitats. California has a coastal network of 124 protected areas designed to help increase the coherence and effectiveness of protecting the state's marine life, habitats, and ecosystems. The network includes three types of MPA: [state marine reserve](#) (SMR), [state marine conservation area](#) (SMCA), and [state marine park](#) (SMP); one MMA: [state marine recreational management area](#) (SMRMA); and [special closures](#). There are 119 MPAs, 5 MMAs and 15 special closures, each with unique boundaries and regulations in the network. Non-consumptive activities, restoration, and permitted scientific research are allowed.

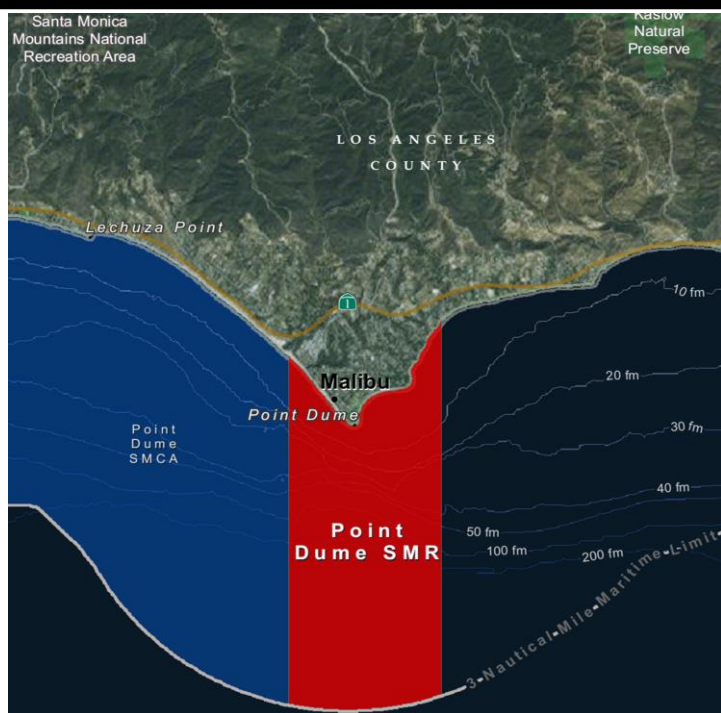
### What is an SMR?

An **SMR** is a type of MPA that protects resources by prohibiting the recreational and/or commercial take of all marine resources. (*Area restrictions are defined in [Title 14, Section 632\(a\)\(1\)\(A\)](#)*).

### Point Dume SMR Overview

- **MPA size:** 7.53 square miles
- **Depth range:** 0 to 1987 feet
- **Along-shore span (shoreline):** 1.9 miles

### Where is Point Dume SMR?



### Point Dume SMR Key Habitats

- **Beaches:** 2.77 miles
- **Rocky shores:** 1.54 miles
- **Surfgrass:** 1.74 miles
- **Sand (all depths):** 5.95 square miles
- **Rock (all depths):** 1.36 square miles
- **Average kelp (1989 to 2008):** 0.05 square miles
- **Unidentified (all depths):** 0.18 square miles
- **Submarine canyon (all depths):** 1.91 square miles

### Boundaries and Regulations

**Boundary:** This area is bounded by the mean high tide line and straight lines connecting the following points in the order listed:

- 34° 00.780' N. lat. 118° 49.200' W. long.;
- 33° 56.960' N. lat. 118° 49.200' W. long.; thence eastward along the three nautical mile offshore boundary to
- 33° 57.061' N. lat. 118° 47.260' W. long.; and
- 34° 01.178' N. lat. 118° 47.260' W. long.

**All take is prohibited in Point Dume SMR.**

# Point Dume State Marine Reserve

## How and Why Point Dume was Chosen for an SMR

MPAs were designed through a collaborative, regional public process by a cross-interest regional stakeholder group (RSG). Using scientific criteria, public input and local resource knowledge the RSG developed MPA proposals. Proposals included site specific rationale (why the site should be an MPA-*included below*), the classification (type of MPA), boundaries, and regulations. Final MPA proposals were sent to the California Fish and Game Commission (Commission) for their adoption process. Point Dume SMR was adopted by the Commission in 2012.

### **South Coast RSG Identified Rationale for Point Dume SMR:**

Intent is to meet habitat replication for key important habitats. Co-located with an ASBS for water quality considerations. This stretch of coast encompasses some of the most diverse habitats in Los Angeles County, including an upwelling zone, submarine canyon habitat, unique spur and groove reef structures, extensive kelp, and diverse understory algal habitat. This is also an area of high species diversity. There is long-term monitoring and research opportunities in this area. This is also an area that plays a significant role in Chumash maritime culture, it is ideally suited for tribal co-management to promote 1) education and outreach, 2) marine stewardship, and 3) Chumash maritime cultural preservation and revitalization.

## Species Likely to Benefit from the Establishment of MPAs in California

Species likely to benefit from establishing an MPA are those, whose home range, behavior, reproduction, exploitation rate or population status indicates that they may benefit from spatial management. This includes species that are directly targeted by fisheries, those which are caught incidental to fishing for the target species (bycatch) and which cannot be returned to the water with a high rate of survival, and those which may be indirectly impacted through ecological changes within MPAs.

For a list of species likely to benefit from MPAs statewide: [www.dfg.ca.gov/marine/mpa/species.asp](http://www.dfg.ca.gov/marine/mpa/species.asp)

For a list of species likely to benefit from south coast MPAs: [www.dfg.ca.gov/marine/pdfs/binders\\_sc/b2q.pdf](http://www.dfg.ca.gov/marine/pdfs/binders_sc/b2q.pdf)

## South Coast Regional Resources

California MPA Overview:

[www.wildlife.ca.gov/MPAs/Network-Overview](http://www.wildlife.ca.gov/MPAs/Network-Overview)

South Coast Regional Goals and Objectives:

[www.dfg.ca.gov/marine/pdfs/binders\\_sc/b1n.pdf](http://www.dfg.ca.gov/marine/pdfs/binders_sc/b1n.pdf)

California MLPA South Coast Study Region Description of MPAs:

[www.dfg.ca.gov/marine/pdfs/binders\\_sc/b1pv.pdf](http://www.dfg.ca.gov/marine/pdfs/binders_sc/b1pv.pdf)

Methods Used to Evaluate MPAs in the South Coast:

[www.dfg.ca.gov/marine/pdfs/binders\\_sc/b2b.pdf](http://www.dfg.ca.gov/marine/pdfs/binders_sc/b2b.pdf)

MPA Research and Monitoring Activities:

[www.wildlife.ca.gov/MPAs/Research-And-Monitoring](http://www.wildlife.ca.gov/MPAs/Research-And-Monitoring)

Regional MPA Statistics:

[www.wildlife.ca.gov/MPAs/Statistics](http://www.wildlife.ca.gov/MPAs/Statistics)

Regional Planning History:

[www.wildlife.ca.gov/Conservation/Marine/MPAs/Planning-Process](http://www.wildlife.ca.gov/Conservation/Marine/MPAs/Planning-Process)

## California MPA Network Resources

Detailed MPA guidebooks maps and brochures:

[www.wildlife.ca.gov/MPAs/Network](http://www.wildlife.ca.gov/MPAs/Network)

California Marine Life Protection Act Marine Protected Areas Master Plan:

[www.wildlife.ca.gov/Conservation/Marine/MPAs/Master-Plan](http://www.wildlife.ca.gov/Conservation/Marine/MPAs/Master-Plan)

Marine Life Protection Act Summary and Network Goals:

[www.wildlife.ca.gov/MPAs/Network-Goals](http://www.wildlife.ca.gov/MPAs/Network-Goals)



**For more Information, visit:**

[www.wildlife.ca.gov/MPAs](http://www.wildlife.ca.gov/MPAs)

**Email:**

[AskMPA@wildlife.ca.gov](mailto:AskMPA@wildlife.ca.gov)

**MPA Mobile:**



Report poaching and polluting,

Call CalTIP

**1-888-334-2258**

The information in this document does not replace the official regulatory language found in the California Code of Regulations Title 14, Section 632 [www.wildlife.ca.gov/Conservation/Marine/MPAs/Network/Title-14-Section-632](http://www.wildlife.ca.gov/Conservation/Marine/MPAs/Network/Title-14-Section-632)