

# Bolsa Chica Basin State Marine Conservation Area (No-Take)

Southern California Marine Protected Areas (MPAs), *Established January 2012*



Estuary  
Photo by Paulo Serpa



Gulls and Snowy egret (*Egretta thula*)  
Photo by Paulo Serpa



Marsh  
Photo by Paulo Serpa

## Site Overview

Photos are representative of the South Coast Region and may not be within this MPA.

## What is an MPA?

MPAs are a type of [marine managed area](#) (MMA) where marine or estuarine waters are set aside primarily to protect or conserve marine life and associated habitats. California has a coastal network of 124 protected areas designed to help increase the coherence and effectiveness of protecting the state's marine life, habitats, and ecosystems. The network includes three types of MPA: [state marine reserve](#) (SMR), [state marine conservation area](#) (SMCA), and [state marine park](#) (SMP); one MMA: [state marine recreational management area](#) (SMRMA); and [special closures](#). There are 119 MPAs, 5 MMAs and 15 special closures, each with unique boundaries and regulations in the network. Non-consumptive activities, restoration, and permitted scientific research are allowed.

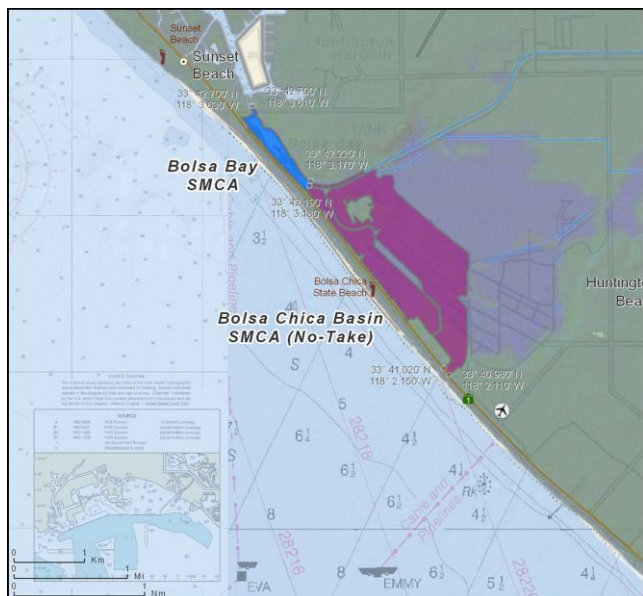
## What is an SMCA (No-Take)?

An **SMCA (No-Take)** is a type of MPA that protects resources by prohibiting commercial and recreational take while allowing take incidental to the permitted operation and maintenance of artificial structures inside the SMCA.

## Bolsa Chica Basin SMCA (No-Take) Overview & Key Habitats

- **MPA size:** 0.7 square miles
- **Estuary:** 0.65 miles
- **Coastal marsh:** 2.69 miles
- **Marsh:** 0.53 square miles
- **Unidentified (all depths):** 0.66 square miles

## Where is Bolsa Chica Basin SMCA (No-Take)?



## Boundaries and Regulations

**Boundary:** This area includes the waters below the mean high tide line within the Bolsa Chica Basin estuary northeastward of the Pacific Coast Highway Bridge, approximated by a straight line between the following two points:

- 33° 41.028' N. lat. 118° 02.153' W. long.; and
- 33° 40.981' N. lat. 118° 02.109' W. long.; and southeastward of a straight line between the following two points:
- 33° 42.219' N. lat. 118° 03.167' W. long.; and
- 33° 42.177' N. lat. 118° 03.186' W. long.

**Only the following take is allowed in Bolsa Chica Basin SMCA:** take pursuant to routine operation and maintenance, habitat restoration, maintenance dredging, research and education, and maintenance of artificial structures inside the conservation area per any required federal, state and local permits, or activities pursuant to Section 630, or as otherwise authorized by the department. Boating, swimming, wading, and diving are prohibited within the conservation area.

No person, except state and local law enforcement officers, fire suppression agencies and employees of the department in the performance of their official duties or persons possessing written permission from the department or employees of Signal Corporation and its invitees for the purpose of carrying out oil and gas operations, shall enter this conservation area and remain therein except on established trails, paths, or other designated areas. No person shall enter this conservation area between the hours of 8:00 p.m. and 6:00 a.m.

# Bolsa Chica Basin State Marine Conservation Area (No-Take)

## How and Why Bolsa Chica Basin was Chosen for an SMCA (No-Take)

MPAs were designed through a collaborative, regional public process by a cross-interest regional stakeholder group (RSG). Using scientific criteria, public input and local resource knowledge the RSG developed MPA proposals. RSG proposals included site specific rationale (why the site should be an MPA-*included below*), the classification (type of MPA), boundaries, and regulations. Final MPA proposals were sent to the California Fish and Game Commission (Commission) for their adoption process. Bolsa Chica Basin SMCA (No-Take) was adopted by the Commission in 2012.

### **South Coast RSG Identified Rationale for Bolsa Chica Basin SMCA (No-Take):**

The purpose of this MPA is to protect estuarine habitat, which serves as a nursery for a number of fish species and includes special status bird species.

## Species Likely to Benefit from the Establishment of MPAs in California

Species likely to benefit from establishing an MPA are those, whose home range, behavior, reproduction, exploitation rate or population status indicates that they may benefit from spatial management. This includes species that are directly targeted by fisheries, those which are caught incidental to fishing for the target species (bycatch) and which cannot be returned to the water with a high rate of survival, and those which may be indirectly impacted through ecological changes within MPAs.

For a list of species likely to benefit from MPAs statewide: [www.dfg.ca.gov/marine/mpa/species.asp](http://www.dfg.ca.gov/marine/mpa/species.asp)

For a list of species likely to benefit from south coast MPAs: [www.dfg.ca.gov/marine/pdfs/binders\\_sc/b2q.pdf](http://www.dfg.ca.gov/marine/pdfs/binders_sc/b2q.pdf)

## South Coast Regional Resources

California MPA Overview:

[www.wildlife.ca.gov/MPAs/Network-Overview](http://www.wildlife.ca.gov/MPAs/Network-Overview)

South Coast Regional Goals and Objectives:

[www.dfg.ca.gov/marine/pdfs/binders\\_sc/b1n.pdf](http://www.dfg.ca.gov/marine/pdfs/binders_sc/b1n.pdf)

California MLPA South Coast Study Region Description of MPAs:

[www.dfg.ca.gov/marine/pdfs/binders\\_sc/b1pv.pdf](http://www.dfg.ca.gov/marine/pdfs/binders_sc/b1pv.pdf)

Methods Used to Evaluate MPAs in the South Coast:

[www.dfg.ca.gov/marine/pdfs/binders\\_sc/b2b.pdf](http://www.dfg.ca.gov/marine/pdfs/binders_sc/b2b.pdf)

MPA Research and Monitoring Activities:

[www.wildlife.ca.gov/MPAs/Research-And-Monitoring](http://www.wildlife.ca.gov/MPAs/Research-And-Monitoring)

Regional MPA Statistics:

[www.wildlife.ca.gov/MPAs/Statistics](http://www.wildlife.ca.gov/MPAs/Statistics)

Regional Planning History:

[www.wildlife.ca.gov/Conservation/Marine/MPAs/Planning-Process](http://www.wildlife.ca.gov/Conservation/Marine/MPAs/Planning-Process)

## California MPA Network Resources

Detailed MPA guidebooks maps and brochures:

[www.wildlife.ca.gov/MPAs/Network](http://www.wildlife.ca.gov/MPAs/Network)

California Marine Life Protection Act Marine Protected Areas Master Plan:

[www.wildlife.ca.gov/Conservation/Marine/MPAs/Master-Plan](http://www.wildlife.ca.gov/Conservation/Marine/MPAs/Master-Plan)

Marine Life Protection Act Summary and Network Goals:

[www.wildlife.ca.gov/MPAs/Network-Goals](http://www.wildlife.ca.gov/MPAs/Network-Goals)



For more information, visit:

[www.wildlife.ca.gov/MPAs](http://www.wildlife.ca.gov/MPAs)

Email:

[AskMPA@wildlife.ca.gov](mailto:AskMPA@wildlife.ca.gov)

MPA Mobile:



Report poaching and polluting,  
Call CalTIP

1-888-334-2258