

What is a California marine protected area (or “MPA”)?

An MPA is a type of managed area whose main purpose is to protect or conserve marine life and habitats in ocean or estuarine waters. California's MPA Network consists of 124 areas with varying levels of protection and 14 special closures, all designed to help safeguard the state's marine ecosystems. The ban on collecting and fishing in no-take marine conservation areas such as Casino Point State Marine Conservation Area provides very high levels of protection.

One goal for California's MPAs was to strategically place them near each other to form an interconnected network that would help to preserve the flow of life between marine ecosystems. Within that network each MPA has unique goals and regulations, and non-consumptive activities, permitted scientific research, monitoring, and educational pursuits may be allowed.

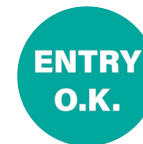
Why was this location chosen for a state marine conservation area?

One of the goals for Casino Point State Marine Conservation Area is to protect the kelp forest and rocky reef habitat found there. Kelp bass, señorita, and the bright orange state marine fish, the garibaldi, are often seen swimming through the kelp forest, while giant sea bass can be found along its deeper edges. California spiny lobster and abalone scavenge for food across the rocky reef and hide in crevices, while sanddabs hunt for invertebrates and camouflage themselves on the sandy seafloor.

Casino Point State Marine Conservation Area is one of two California MPAs that permits visitors to attract the local fish for viewing by feeding them. Placing a no-take state marine conservation area here provides very high levels of protection for marine species and the habitats they use.

Quick Facts: Casino Point State Marine Conservation Area

- **MPA size:** 0.01 square miles
- **Shoreline Span:** 0.1 miles
- **Depth range:** 0 to 73 feet
- **Habitat composition:**
Rock: 0.01 square miles



Non-Consumptive
Activities

Feeding Fish

No Fishing

No Collecting

Further Information:

- MPA Website: www.wildlife.ca.gov/MPAs
- MPA and Sportfishing Interactive Map: www.wildlife.ca.gov/OceanSportfishMap
- Email: AskMarine@wildlife.ca.gov

Photos - Upper: Aerial view of Casino Point State Marine Conservation Area, photo © Sarah Tipton, CC BY 2.0 **Lower right:** Kelp bass in the kelp forest at Casino Point State Marine Conservation Area, photo © Brandon Postal, CC BY-NC 2.0 **Lower left:** California spiny lobster in the conservation area, photo © Julian Clark, CC BY-NC 2.0



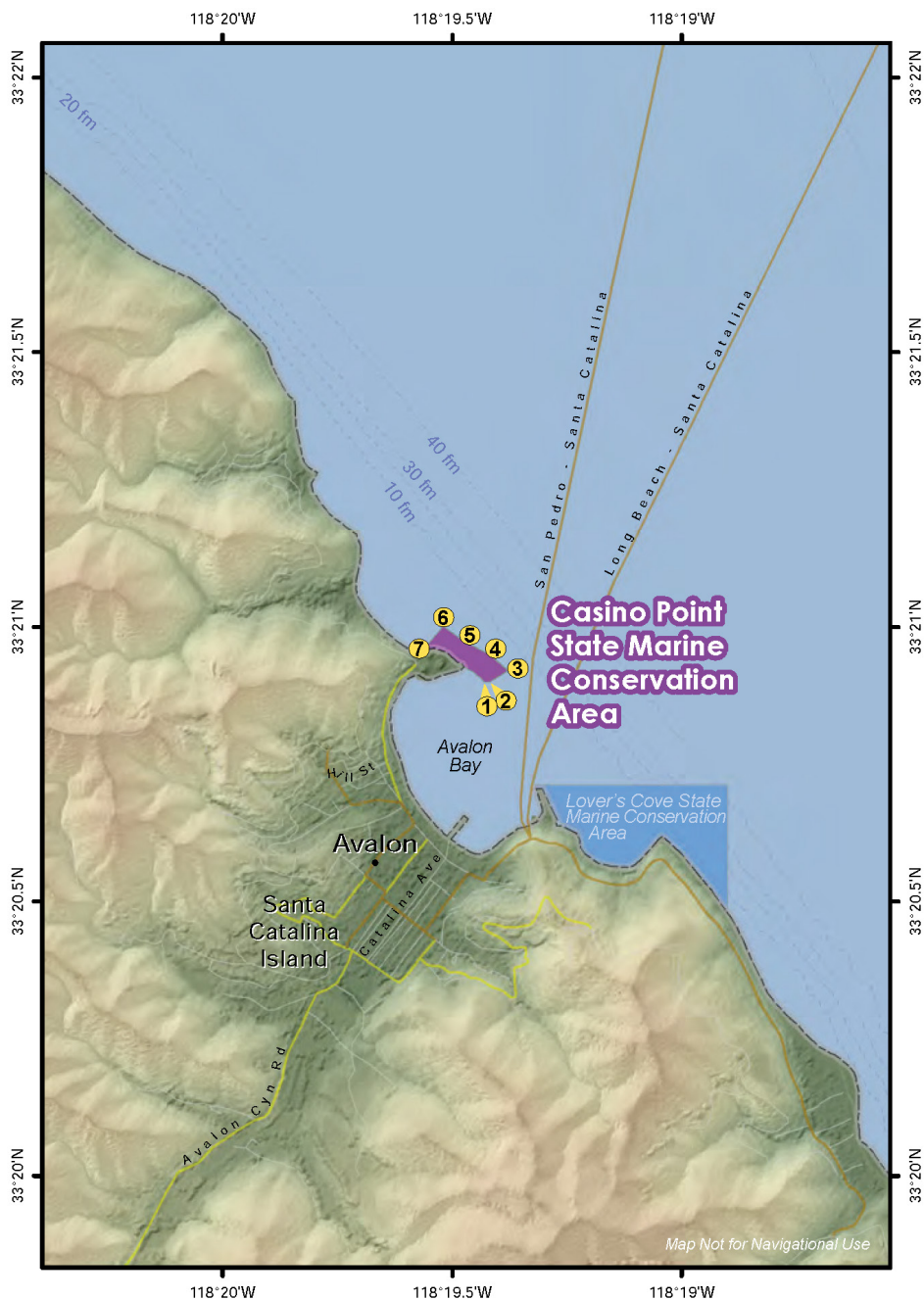
Report poachers and polluters
Call CalTIP: 1 (888) 334-2258

or text 847411 - begin message with "CalTIP"
followed by the details.



Casino Point State Marine Conservation Area

Southern California - Santa Catalina Island



Version 2, September 2022

Casino Point State Marine Conservation Area Boundary and Regulations from California Code of Regulations Title 14, Section 632

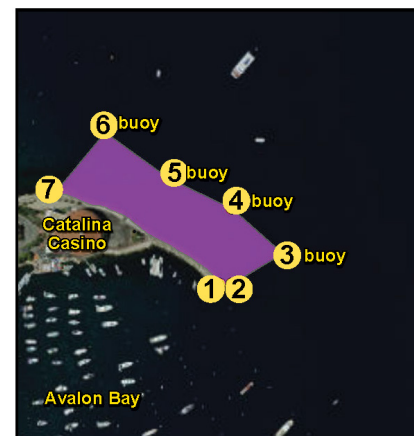
Boundary:

This area is bounded by the mean high tide line and straight lines connecting the following points in the order listed:

- 33° 20.900' N. lat. 118° 19.430' W. long. ①;
- 33° 20.900' N. lat. 118° 19.420' W. long. ②;
- 33° 20.920' N. lat. 118° 19.380' W. long. ③;
- 33° 20.950' N. lat. 118° 19.420' W. long. ④;
- 33° 20.970' N. lat. 118° 19.470' W. long. ⑤;
- 33° 21.000' N. lat. 118° 19.520' W. long. ⑥; and
- 33° 20.960' N. lat. 118° 19.560' W. long. ⑦

Permitted/Prohibited Uses:

1. It is unlawful to injure, damage, take, or possess any living, geological, or cultural marine resource for recreational and/or commercial purposes, with the following specified exceptions:
 - a. Take pursuant to maintenance of artificial structures inside the conservation area is allowed pursuant to any required federal, state and local permits, or as otherwise authorized by the Department.
 - b. Feeding of fish for marine life viewing is allowed.



Take may be authorized for research, restoration, and monitoring purposes under a scientific collecting permit. See California Code of Regulations Title 14, Section 632(a).

The information in this document does not replace the official regulatory language found in the California Code of Regulations Title 14, Section 632. View these regulations online at www.wildlife.ca.gov/Conservation/Marine/MPAs/Network.