

Dana Point State Marine Conservation Area

Southern California Marine Protected Areas (MPAs), *Established January 2012*



Dana Point SMCA
Photo by Paulo Serpa



Male California sheephead
(*Semicossyphus pulcher*)
Photo by Mark Winscher



Rocky reef
Gopher rockfish
(*Sebastes carnatus*)
ROV Photo by MARE/CDFW

Site Overview

Photos are representative of the South Coast Region and may not be within this MPA.

What is an MPA?

MPAs are a type of [marine managed area](#) (MMA) where marine or estuarine waters are set aside primarily to protect or conserve marine life and associated habitats. California has a coastal network of 124 protected areas designed to help increase the coherence and effectiveness of protecting the state's marine life, habitats, and ecosystems. The network includes three types of MPA: [state marine reserve](#) (SMR), [state marine conservation area](#) (SMCA), and [state marine park](#) (SMP); one MMA: [state marine recreational management area](#) (SMRMA); and [special closures](#). There are 119 MPAs, 5 MMAs and 15 special closures, each with unique boundaries and regulations in the network. Non-consumptive activities, restoration, and permitted scientific research are allowed.

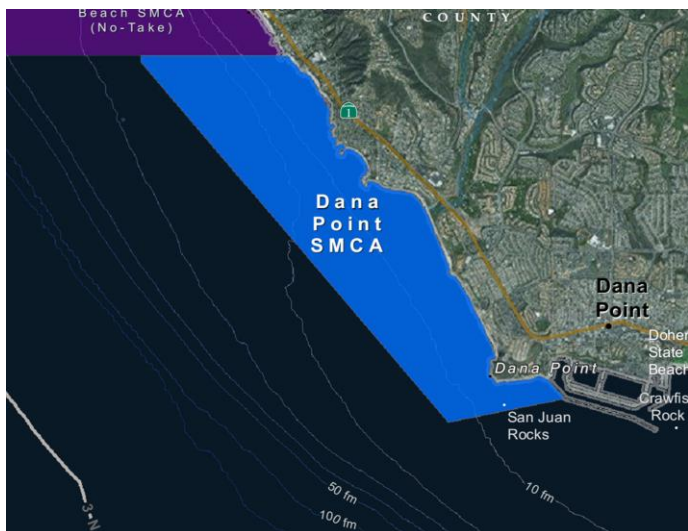
What is an SMCA?

An **SMCA** is a type of MPA that protects resources by allowing for only specific types of recreational and/or commercial take to occur. (Area restrictions are defined in [Title 14, Section 632\(a\)\(1\)\(C\)](#)).

Dana Point SMCA Key Habitats & Overview

- **MPA size:** 3.47 square miles
- **Depth range:** 3 to 152 feet
- **Along-shore span (shoreline):** 3.9 miles
- **Beaches:** 3.6 miles
- **Rocky shores:** 2.06 miles
- **Surfgrass:** 2.16 miles
- **Sand (all depths):** 2.47 square miles
- **Rock (all depths):** 0.49 square miles
- **Average kelp (1989 to 2008):** 0.08 square miles
- **Unidentified (all depths):** 0.48 square miles

Where is Dana Point SMCA?



Boundaries and Regulations

Boundary: This area is bounded by the mean high tide line and straight lines connecting the following points in the order listed:

- 33° 30.050' N. lat. 117° 44.762' W. long.;
- 33° 30.050' N. lat. 117° 46.000' W. long.;
- 33° 30.000' N. lat. 117° 46.000' W. long.;
- 33° 27.300' N. lat. 117° 43.300' W. long.;
- 33° 27.478' N. lat. 117° 42.276' W. long.; and
- 33° 27.622' N. lat. 117° 42.425' W. long.

Only the following take is allowed in Dana Point SMCA:

1. The recreational take of [finfish](#) by hook and line or by spearfishing, and spiny lobster and sea urchin.
2. The commercial take of sea urchin, spiny lobster by trap, and [coastal pelagic species](#) by round haul net, brail gear, and light boat is allowed. Not more than five percent by weight of any commercial coastal pelagic species catch landed or possessed shall be other incidentally taken species.
3. Take pursuant to operation and maintenance of artificial structures inside the conservation area is allowed per any required federal, state and local permits, or as otherwise authorized by the department.

Take of all living marine resources from inside tidepools is prohibited. For purposes of this section, tidepools are defined as the area encompassing the rocky pools that are filled with seawater due to retracting tides between the mean higher high tide line and the mean lower low tide line.

Dana Point SMCA State Marine Conservation Area

How and Why Dana Point was Chosen for an SMCA

MPAs were designed through a collaborative, regional public process by a cross-interest regional stakeholder group (RSG). Using scientific criteria, public input and local resource knowledge the RSG developed MPA proposals. RSG proposals included site specific rationale (why the site should be an MPA-*included below*), the classification (type of MPA), boundaries, and regulations. Final MPA proposals were sent to the California Fish and Game Commission (Commission) for their adoption process. Dana Point SMCA was adopted by the Commission in 2012.

South Coast RSG Identified Rationale for Dana Point SMCA:

This MPA will resolve CDFW boundary feasibility issues and maintain legacy protection of intertidal invertebrate species such as kellet whelks, top shells, limpets and sea cucumbers and abalone while allowing lobster and urchin and finfish take.

Species Likely to Benefit from the Establishment of MPAs in California

Species likely to benefit from establishing an MPA are those, whose home range, behavior, reproduction, exploitation rate or population status indicates that they may benefit from spatial management. This includes species that are directly targeted by fisheries, those which are caught incidental to fishing for the target species (bycatch) and which cannot be returned to the water with a high rate of survival, and those which may be indirectly impacted through ecological changes within MPAs.

For a list of species likely to benefit from MPAs statewide: www.dfg.ca.gov/marine/mpa/species.asp

For a list of species likely to benefit from south coast MPAs: www.dfg.ca.gov/marine/pdfs/binders_sc/b2q.pdf

South Coast Regional Resources

California MPA Overview:

www.wildlife.ca.gov/MPAs/Network-Overview

South Coast Regional Goals and Objectives:

www.dfg.ca.gov/marine/pdfs/binders_sc/b1n.pdf

California MLPA South Coast Study Region Description of MPAs:

www.dfg.ca.gov/marine/pdfs/binders_sc/b1pv.pdf

Methods Used to Evaluate MPAs in the South Coast:

www.dfg.ca.gov/marine/pdfs/binders_sc/b2b.pdf

MPA Research and Monitoring Activities:

www.wildlife.ca.gov/MPAs/Research-And-Monitoring

Regional MPA Statistics:

www.wildlife.ca.gov/MPAs/Statistics

Regional Planning History:

www.wildlife.ca.gov/Conservation/Marine/MPAs/Planning-Process

California MPA Network Resources

Detailed MPA guidebooks maps and brochures:

www.wildlife.ca.gov/MPAs/Network

California Marine Life Protection Act Marine Protected Areas Master Plan:

www.wildlife.ca.gov/Conservation/Marine/MPAs/Master-Plan

Marine Life Protection Act Summary and Network Goals:

www.wildlife.ca.gov/MPAs/Network-Goals



For more information, visit:

www.wildlife.ca.gov/MPAs

Email:

AskMPA@wildlife.ca.gov

MPA Mobile:



Report poaching and polluting,
Call CalTIP

1-888-334-2258

The information in this document does not replace the official regulatory language found in the California Code of Regulations Title 14, Section 632 www.wildlife.ca.gov/Conservation/Marine/MPAs/Network/Title-14-Section-632