



What is a California marine protected area (or "MPA")?

An MPA is a type of managed area whose main purpose is to protect or conserve marine life and habitats in ocean or estuarine waters. California's MPA Network consists of 124 areas with varying levels of protection and 14 special closures, all designed to help safeguard the state's marine ecosystems. The ban on collecting and fishing in no-take marine conservation areas such as Batiquitos Lagoon State Marine Conservation Area provides very high levels of protection.

One goal for California's MPAs was to strategically place them near each other to form an interconnected network that would help to preserve the flow of life between marine ecosystems. Within that network each MPA has unique goals and regulations, and non-consumptive activities, permitted scientific research, monitoring, and educational pursuits may be allowed.

Why was this location chosen for a state marine conservation area?

One of the goals for Batiquitos Lagoon State Marine Conservation Area is to protect the estuary's marsh, mudflat, and eelgrass habitat. A wide variety of marine species use these habitats, including leopard shark, bat ray, and pipefish. The MPA protects a nursery area for young fish, including California halibut and Pacific staghorn sculpin. Over 200 species of birds live in this wetland area or use it as a stopover site during migrations. Several bird species seen at the conservation area are threatened or endangered, including the western snowy plover, Ridgway's rail, and California least tern.

This marine conservation area overlaps the slightly larger [Batiquitos Lagoon State Ecological Reserve](#). Together, the MPA and ecological reserve protect many different habitat types. Placing a no-take state marine conservation area here provides very high levels of protection for marine species and the habitats they use.



Report poachers and polluters
Call CalTIP: 1 (888) 334-2258

or text 847411 - begin message with "CalTIP"
followed by the details.



Quick Facts: Batiquitos Lagoon State Marine Conservation Area

- **MPA size:** 0.51 square miles
- **Habitat composition:**
 - Estuary: 0.47 square miles
 - Eelgrass: 0.16 square miles
 - Coastal marsh: 1.60 square miles



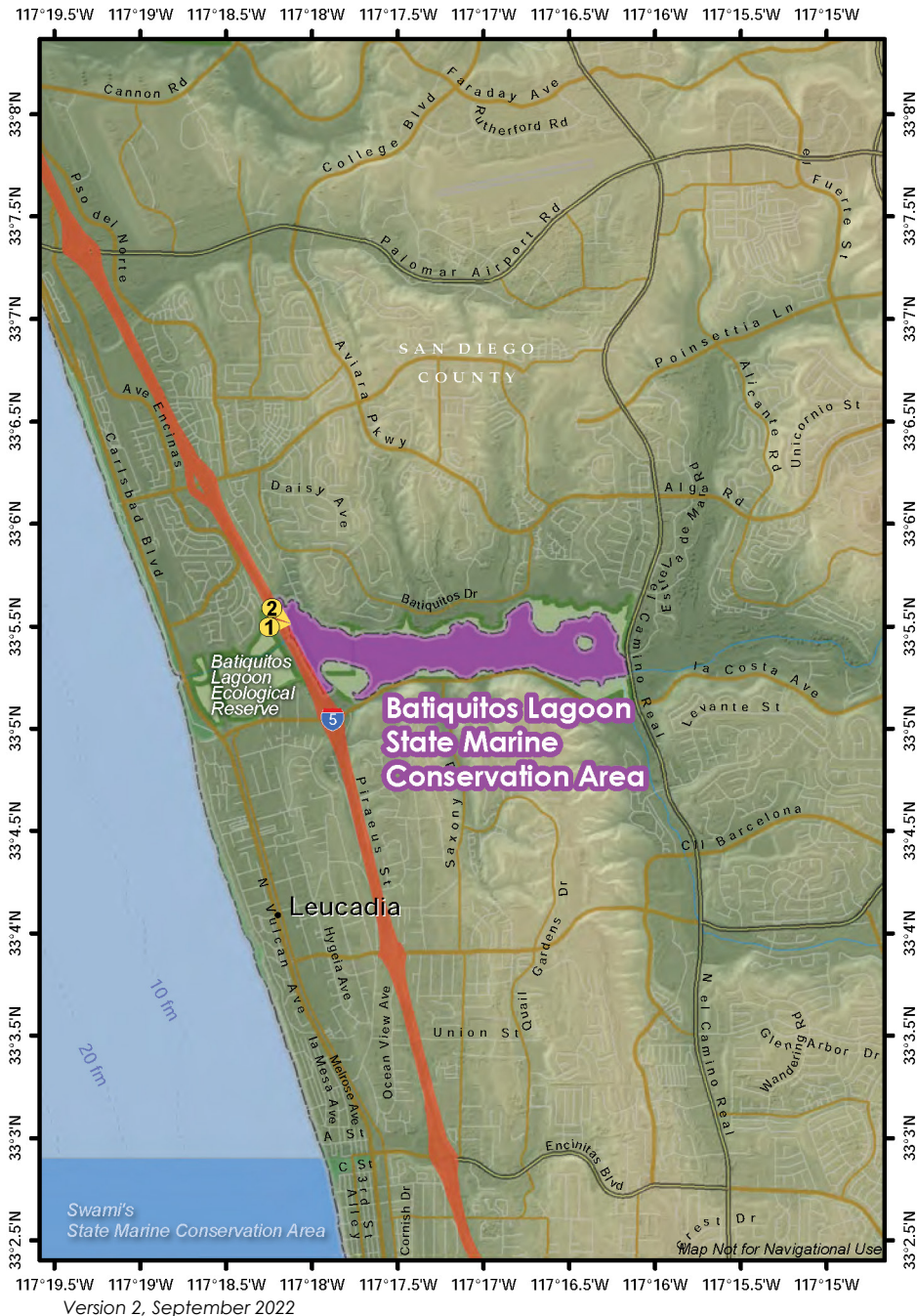
Further Information:

- MPA Website: www.wildlife.ca.gov/MPAs
- MPA and Sportfishing Interactive Map: www.wildlife.ca.gov/OceanSportfishMap
- Email: AskMarine@wildlife.ca.gov

Photos - Upper: Batiquitos Lagoon State Marine Conservation Area, photo © Bryce Bradford, CC BY-NC-ND 2.0. Lower right: California aglaja (sea slug) in the conservation area, photo © Bryce Bradford, CC BY-NC-ND 2.0. Lower left: American white pelicans in the conservation area, © spheller CC BY-NC 2.0

Batiquitos Lagoon State Marine Conservation Area

Southern California - San Diego County



Batiquitos Lagoon State Marine Conservation Area Boundary and Regulations from California Code of Regulations Title 14, Section 632

This area overlaps a portion of the Batiquitos Lagoon Ecological Reserve. Ecological reserve rules are in effect as defined in CCR Title 14, Section 630 or as posted.

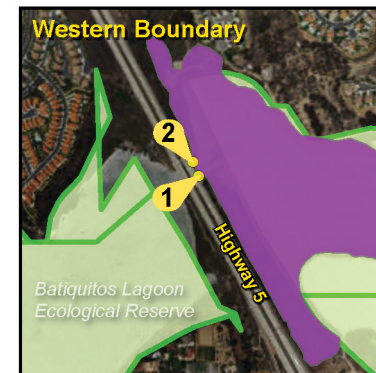
Boundary:

This area includes the waters below the mean high tide line within Batiquitos Lagoon eastward of the Interstate Highway 5 Bridge, approximated by a line between the following two points:

- 33° 05.440' N. lat. 117° 18.120' W. long. ①; and
- 33° 05.460' N. lat. 117° 18.130' W. long. ②

Permitted/Prohibited Uses:

1. It is unlawful to injure, damage, take, or possess any living, geological, or cultural marine resource for commercial and/or recreational purposes, with the following specified exceptions:
 - a. Take pursuant to operation and maintenance, habitat restoration, research and education, maintenance dredging and maintenance of artificial structures inside the conservation area is allowed pursuant to any required federal, state and local permits, or activities pursuant to Section 630, or as otherwise authorized by the Department.
2. Boating, swimming, wading, and diving are prohibited within the conservation area.



Take may be authorized for research, restoration, and monitoring purposes under a scientific collecting permit. See California Code of Regulations Title 14, Section 632(a).

The information in this document does not replace the official regulatory language found in the California Code of Regulations Title 14, Section 632. View these regulations online at www.wildlife.ca.gov/Conservation/Marine/MPAs/Network.