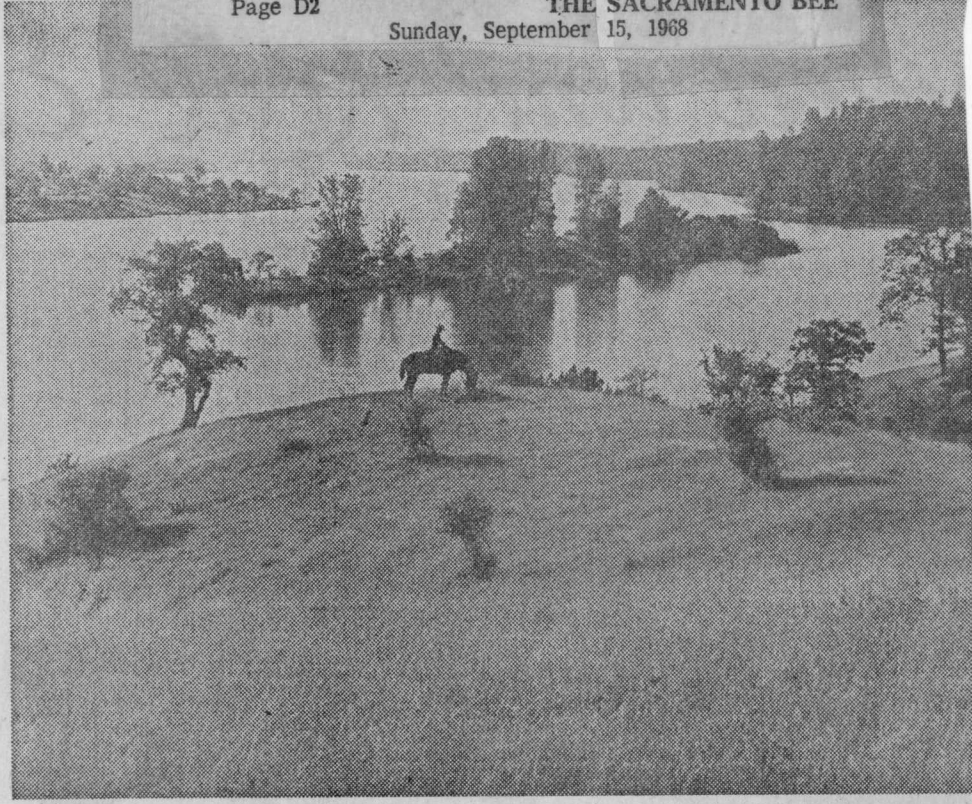


East Park Res



CENTURY RANCH, a recreation-oriented residential development in Colusa County, is designed to include eventually a marina at this point on East Park Lake. Ground was broken yesterday for a clubhouse complex containing the first structures to be built at Century Ranch.

Colusa Project Stresses Recreation

McClatchy Newspapers Service

STONYFORD, Colusa County — Ground has been broken at the Century Ranch for construction of the community recreation complex that will serve property owners in the ranch's recreational development.

The groundbreaking yesterday was for a 5,000 square foot clubhouse which will include a restaurant, swimming pool, clubrooms, bar and pro shop overlooking the Century Ranch golf course.

Eventually, the development will include a marina on East Park Lake, a motel, a condominium apartment development, tennis courts, and an airstrip.

The clubhouse will offer a view of the surrounding Indian Valley landscape including East Park Lake and Snow Mountain.

Dr. Rolf W. Peter, president of Century Ranch, Inc., reported the 1,200 acres have been des-

ignated for home site development for 1,100 family units. He said lot sales have passed the million-dollar mark.

The clubhouse was designed by Bull, Field, Volkman and Stockwell, San Francisco architects. Surrounding landscape planning is being done by Royston, Hanamoto, Beck and Abey, landscape architects, also of San Francisco.

Sacramentans Join Reno Land Venture

McClatchy Newspapers Service

RENO — The completion of Oddie Boulevard Commercial Estates, the first all-commercial subdivision in the Reno-Sparks area, has been announced by Gene Brown, Reno Realtor.

Brown, who said the value of lots in the subdivision was \$1,230,000, noted that 20 were owned and developed by Walter Fong and Edward F. Wong of Sacramento.