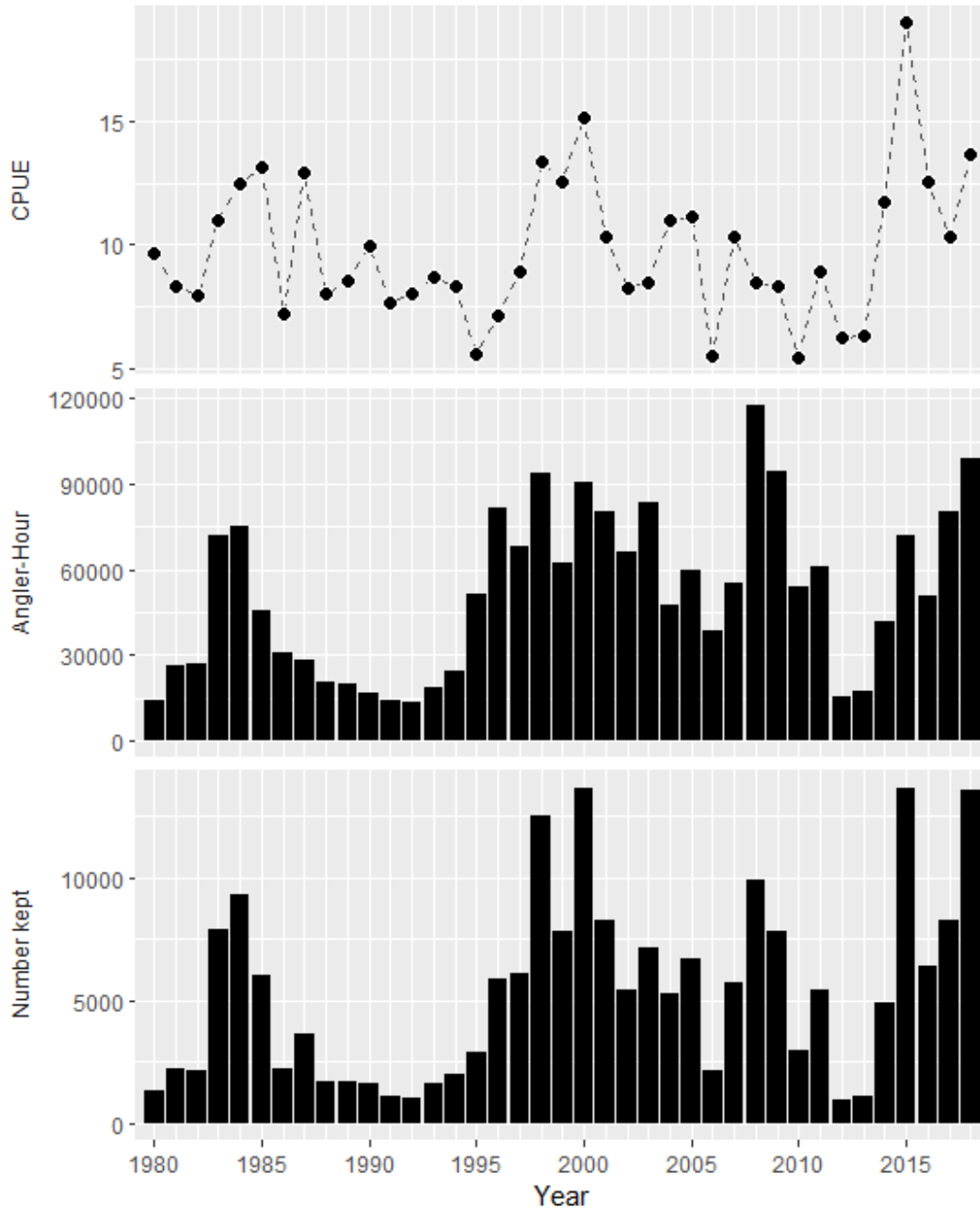


CPFV Annual Summary: Striped Bass



Annual summary of Commercial Passenger Fishing Vessel (CPFV) logs for Striped Bass, 1980-2018. Catch per unit effort (CPUE) as catch per 100 angler-hour. Summary for vessels fishing east of the Golden Gate Bridge and only including trips where at least one angler caught and kept at least one Striped Bass (i.e., a 'successful' trip).