

1

Marine Life Protection Act Initiative




Overview of North Coast Round 1 External Proposed MPA Arrays from Community Groups

Presentation to the MLPA Blue Ribbon Task Force
May 3, 2010 • Crescent City, CA

Evan Fox, Principal Planner • California MLPA Initiative

2

Overview of External MPA Arrays



- March 1: Introduction to External Marine Protected Area (MPA) Arrays
 - Heard rationale
 - Introduction to key geographies and issues
- Today and Tomorrow (May 3-4): Further Details
 - Receive and review Round 1 evaluations
 - Provide any further guidance to MLPA North Coast Regional Stakeholder Group (NCRSG)



Process and Timeline

- Round 1 – External MPA Arrays
 - Developed by community groups
 - November 2009 – March 2010
 - Submitted February 1, followed by evaluations
- Round 2 – NCRSG Draft MPA Proposals
 - Developed by NCRSG
 - March 2010 – July 2010 ← You are here
 - Due May 20, followed by evaluations
- Round 3 – NCRSG Final MPA Proposals
 - Developed by NCRSG
 - July 2010 – October 2010
 - Due August 31, followed by evaluations



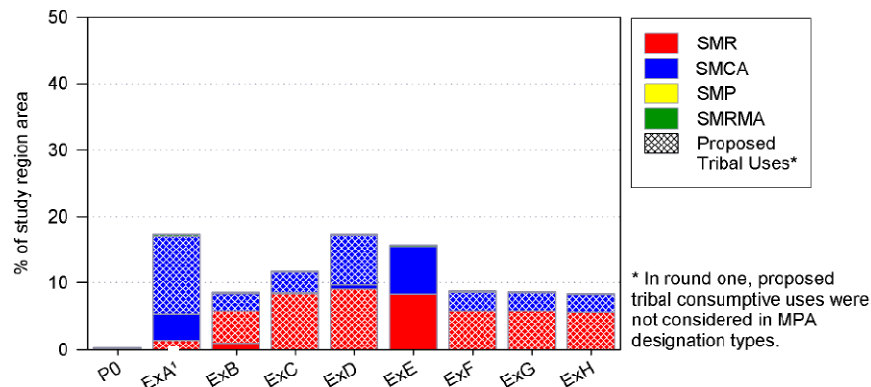
Round 1 External MPA Arrays

- Existing MPAs referred to as Proposal 0 (P0)
 - Represents the “no action alternative”
- External proposed MPA arrays from community groups
 - Eight external MPA arrays were submitted (external MPA arrays A – H)

Total of nine MPA arrays/proposals evaluated in Round 1

Round 1 External MPA Arrays

Comparison of Existing MPAs (Proposal 0) and Round 1 External MPA Arrays by Designation Type



SMR = state marine reserve

SMCA = state marine conservation area

SMP = state marine park

SMRMA = state marine recreational management area (not an MPA)

Considerations for External MPA Arrays

- Guidance for considering tribal uses not solidified when external MPA arrays submitted
 - SAT evaluated MPAs in a consistent manner, based on proposed allowed uses (some SMCAs in External MPA Array C evaluated as SMRs)
- Complete fine-scale substrate data not available when external MPA arrays submitted
 - Evaluations presented today incorporate additional substrate data and correct a previous error
- Proposed “mobile” MPAs in External MPA Array A evaluated as static; proposed stewardship zones not evaluated



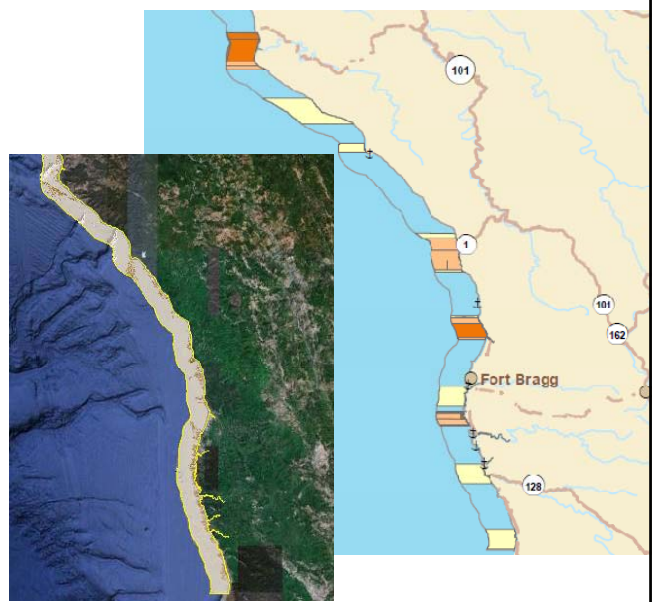
Northern Bioregion

- Limited hard bottom, kelp, and deep habitats
- Humboldt Bay estuary
- Crescent City, Trinidad, Humboldt Bay ports



Southern Bioregion

- More abundant rock and kelp
- Generally less access
- Shelter Cove, Fort Bragg, Albion ports





External Arrays: Oregon to Klamath River

- All have designs at Pyramid Point
- Some nearshore habitats at False Klamath
- Only mapped kelp in northern bioregion
- Tribal considerations (e.g. ribbon concept)
- Crescent City port



External Arrays: Klamath River to Mad River

- Two basic designs around Reading Rock
- Some nearshore habitats at Patrick's Point
- Trinidad port





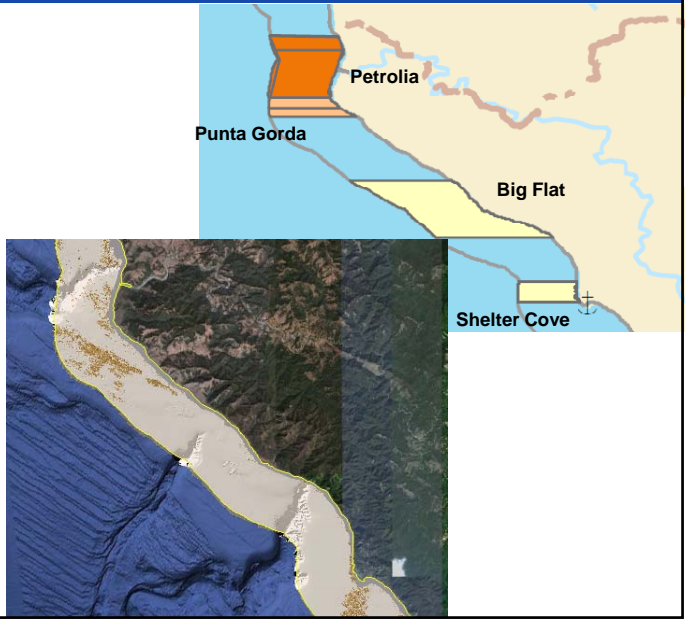
External Arrays: Mad River to Mattole River

- All have designs at Punta Gorda and South Humboldt Bay
- Soft-bottom habitats at Eel River MPAs
- Diverse habitats at False Cape MPA
- Humboldt Bay port



External Arrays: Mattole River to Shelter Cove

- Generally fewer access points
- Varied designs at Punta Gorda
- Soft-bottom habitats at Big Flat
- City of Petrolia and Shelter Cove port





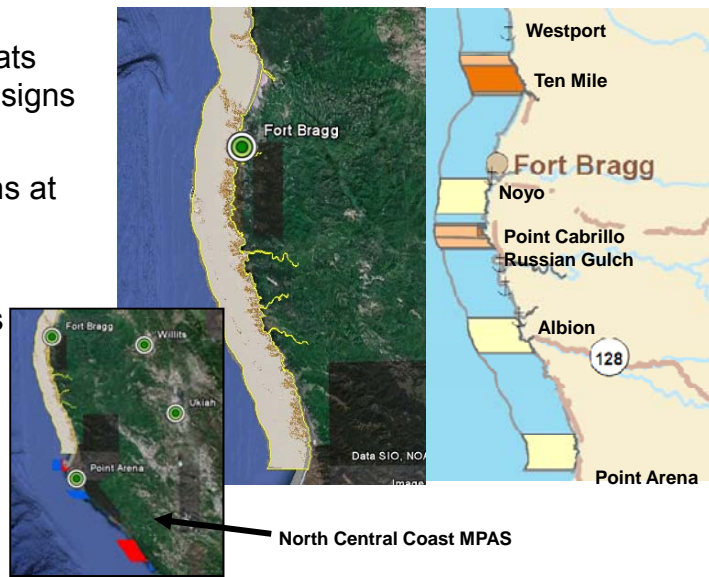
External Arrays: Shelter Cove to Westport

- Varied designs in some arrays
- Diverse habitats
- Shelter Cove and Westport



External Arrays: Westport to Point Arena

- Diverse habitats and varied designs at Ten Mile
- Goal 3 designs at Point Cabrillo
- Several river estuary MPAs





Basic Materials Available for Arrays

- Cover Sheet
- Narrative Rationale
- Consideration of Existing MPAs
- Maps (overview and subregional)
- Description of MPAs
- Staff Summaries
- Habitat Calculations
- Overlap Maps
- Area Charts

Materials available online at http://www.dfg.ca.gov/mlpa/mpaproposals_nc.asp
Additional information available in MarineMap: <http://northcoast.marinemap.org/>



SAT Evaluations of Round 1 Arrays

- Habitat Representation
- Habitat Replication
- MPA Size
- MPA Spacing
- Bioeconomic Models
- Marine Birds and Mammals
- Potential Impacts to Fisheries
- Water Quality

Materials available online at http://www.dfg.ca.gov/mlpa/mpaproposals_nc.asp
Additional information available in MarineMap: <http://northcoast.marinemap.org/>



Other Feedback on Round 1 Arrays

- Other Analyses
 - California Department of Fish and Game Feasibility Analysis
 - California State Parks Evaluation

Materials available online at http://www.dfg.ca.gov/mlpa/mpaproposals_nc.asp
 Additional information available in MarineMap: <http://northcoast.marinemap.org/>



Round 2 Timeline

