

Marine Life Protection Act Initiative



Round 2 Evaluation of Potential Impacts to Commercial and Recreational Fisheries in the North Coast Study Region

Presentation to the MLPA Blue Ribbon Task Force
July 21, 2010 • Fort Bragg, CA

Charles Steinback • Ecotrust

Round 2 Evaluation: Overview

- Reviewed the four MLPA North Coast Regional Stakeholder Group (NCRSG) draft marine protected area (MPA) proposals (RU1, RU2, SA1, SA2)
- Based on the aggregate fishing grounds and cost estimates derived from the data collection effort:
 - Determined percentage of area and value affected
 - Evaluated the maximum potential first order economic impact
 - Considered or identified “outliers” – i.e., fisheries likely to experience disproportional impacts
- Focus is on fisheries, and not on regional multipliers
- Not considering special closures, ran cursory analysis using MarineMap; potential impacts where 0.0%, except three recreational fisheries and they were < 0.2%



Round 2 Evaluation: Overview

- Understood that non-commercial gathering activities specifically authorized in tribal resource protection areas will be allowable for all recreational users
- To provide information regarding proposed allowed uses, for any MPA where tribal gathering activities are identified as proposed use, have reported potential impacts to any recreational fisheries identified as not being allowed in that MPA



Evaluation Overview

	Commercial	CPFV	Recreational
# of fisheries	10 species	5 species	6 species
Level of analysis	Port-fishery combinations	Port-fishery combinations	Results reported by user group (private vessel, kayak, dive) and by port
Sample size	219	22	574

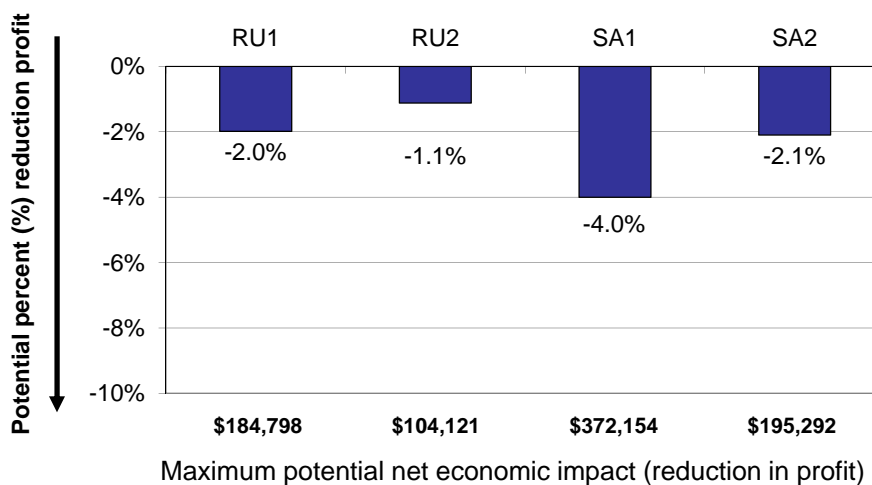
****Reported results represent the maximum potential impacts**

	Commercial	CPFV	Recreational
Potential impacts on fishing grounds (area and stated value)	✓	✓	✓
Potential net economic impacts -1st order	✓	✓	
Potential gross economic impacts -1st order	✓		
Disproportionate impacts on fisheries	✓	✓	
Disproportionate impacts on individuals	✓		



Net Economic Impacts (Commercial)

- RU2 has the lowest potential net economic impact



NCRSG Draft MPA Proposals: RU1=Ruby 1 RU2=Ruby 2 SA1=Sapphire 1 SA2=Sapphire 2



Net Economic Impacts (Commercial)

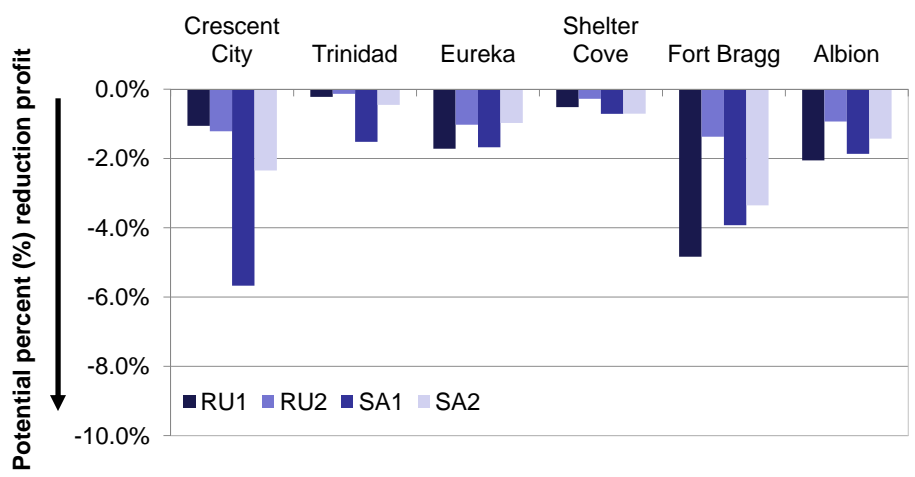
- Reported results represent the maximum potential impacts (i.e., “worst case scenario”)

Port	RU1	RU2	SA1	SA2
	\$ Reduction in Profit			
Crescent City	\$45,429	\$52,283	\$243,852	\$100,973
Trinidad	\$1,481	\$902	\$10,127	\$3,011
Eureka	\$35,243	\$21,006	\$34,332	\$20,000
Shelter Cove	\$205	\$109	\$283	\$280
Fort Bragg	\$98,233	\$27,910	\$79,738	\$68,102
Albion	\$4,207	\$1,911	\$3,823	\$2,925
North Coast Region	\$184,798	\$104,121	\$372,154	\$195,292
	% Reduction in Profit			
Crescent City	1.1%	1.2%	5.7%	2.3%
Trinidad	0.2%	0.1%	1.5%	0.5%
Eureka	1.7%	1.0%	1.7%	1.0%
Shelter Cove	0.5%	0.3%	0.7%	0.7%
Fort Bragg	4.8%	1.4%	3.9%	3.4%
Albion	2.1%	0.9%	1.9%	1.4%
North Coast Region	2.0%	1.1%	4.0%	2.1%



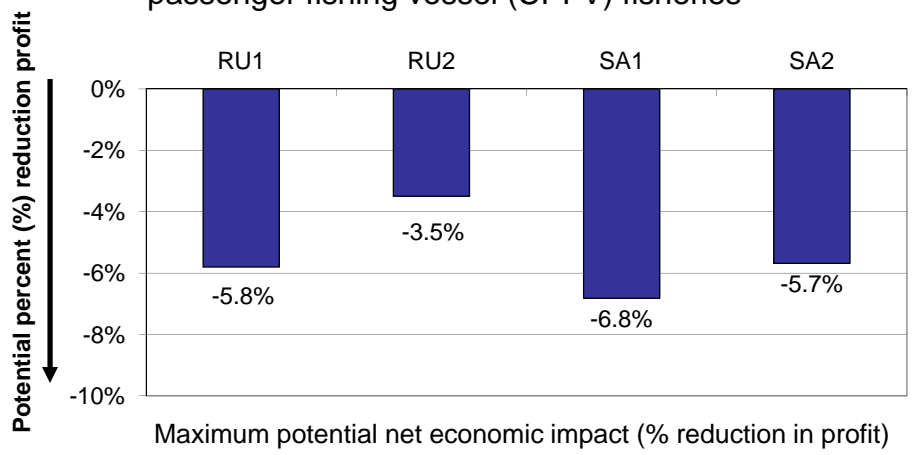
Net Economic Impacts (Commercial)

- Generally, Trinidad and Shelter Cove have the lowest potential net impacts across all proposals



Net Economic Impacts (CPFV)

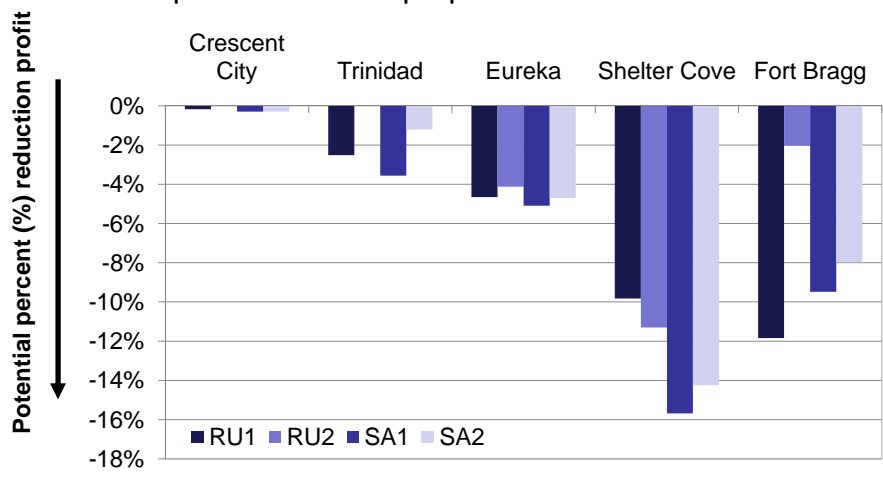
- SA1 has the highest and RU2 has the lowest potential net economic impacts on commercial passenger fishing vessel (CPFV) fisheries





Net Economic Impacts (CPFV)

- Generally, Shelter Cove has the highest potential impacts and Crescent City has the lowest potential impacts across all proposals

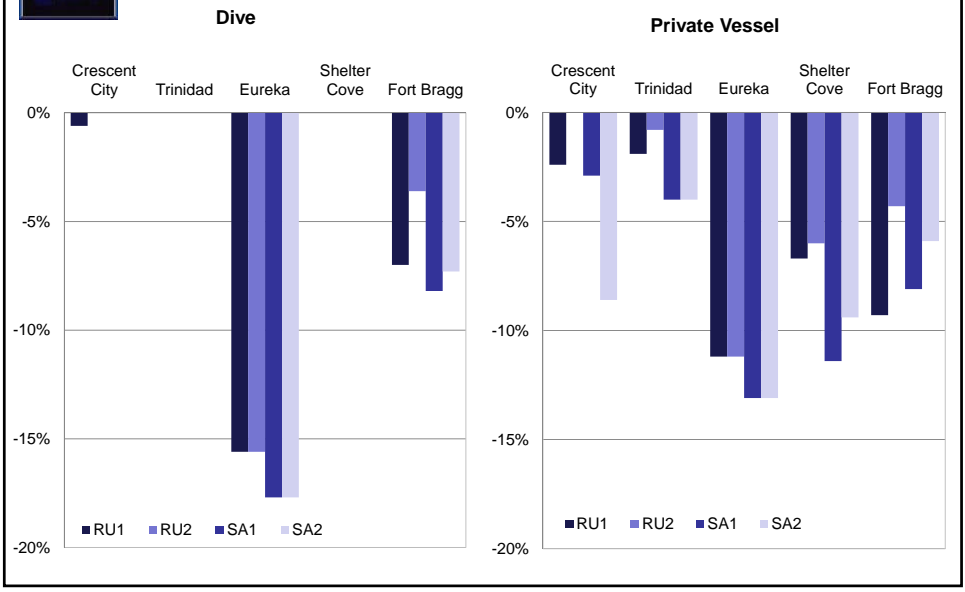


Potential Impacts (Recreational)

- Potential impacts to recreational fisheries vary across proposals and also by port, user group and fishery
- For example, rockfish/bottomfish generally tends to have higher potential impacts across ports and user groups; however, potential impacts to this fishery across ports and user groups vary substantially



Potential Impacts (Rec.) - Rockfish



Disproportionate Impacts Summary

- Commercial port-fishery combinations disproportionately impacted

Port	Fishery	MPA Proposal(s)	Estimated Impact on Stated Value of Total Fishing Grounds
Fort Bragg	Dungeness Crab	RU1, SA1, SA2	3.3%, 2.3%, 2.2%
Crescent City	Dungeness Crab	SA1	3.1%

* Note on the following slide that surfperch may be disproportionately impacted relative to other fisheries

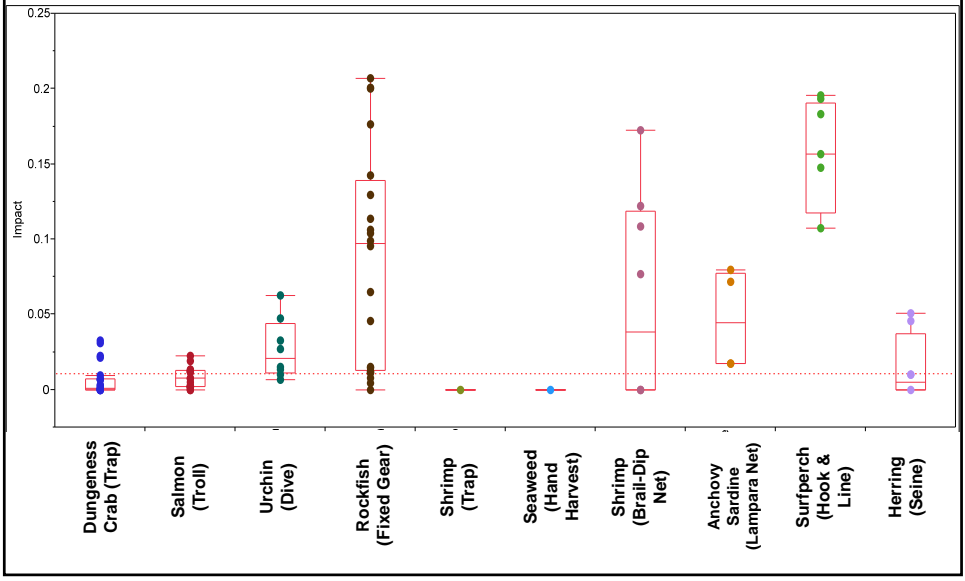
- CPFV port-fishery combinations disproportionately impacted

Port	Fishery	MPA Proposal(s)	Estimated Impact on Stated Value of Total Fishing Grounds
Fort Bragg	Dungeness Crab	RU1, SA1, SA2	9.8%, 4.6%, 4.6%

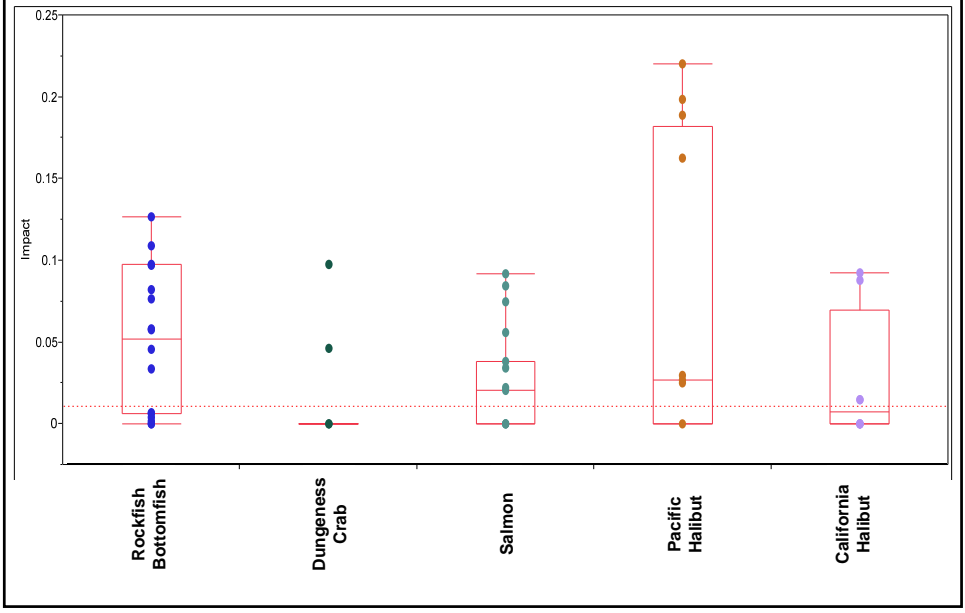
* Note on the following slide the bi-modal nature of potential impacts to Pacific halibut



Disproportionate Impacts on Commercial Fisheries



Disproportionate Impacts on CPFV Fisheries





Summary Across Sectors

- The estimated average net economic impact across all proposals varies between commercial (2.3%) and CPFV (5.4%)
- SA1 generally has higher potential impacts than other proposals for commercial and CPFV fisheries
- The rockfish fishery generally has the highest potential impact for recreational species

		MPA Proposal with highest potential impact		MPA Proposal with lowest potential impact	
		Net economic value			
Commercial	SA1	-4.0%		RU2	-1.1%
CPFV	SA1	-6.8%		RU2	-3.5%



Convergence

