

1

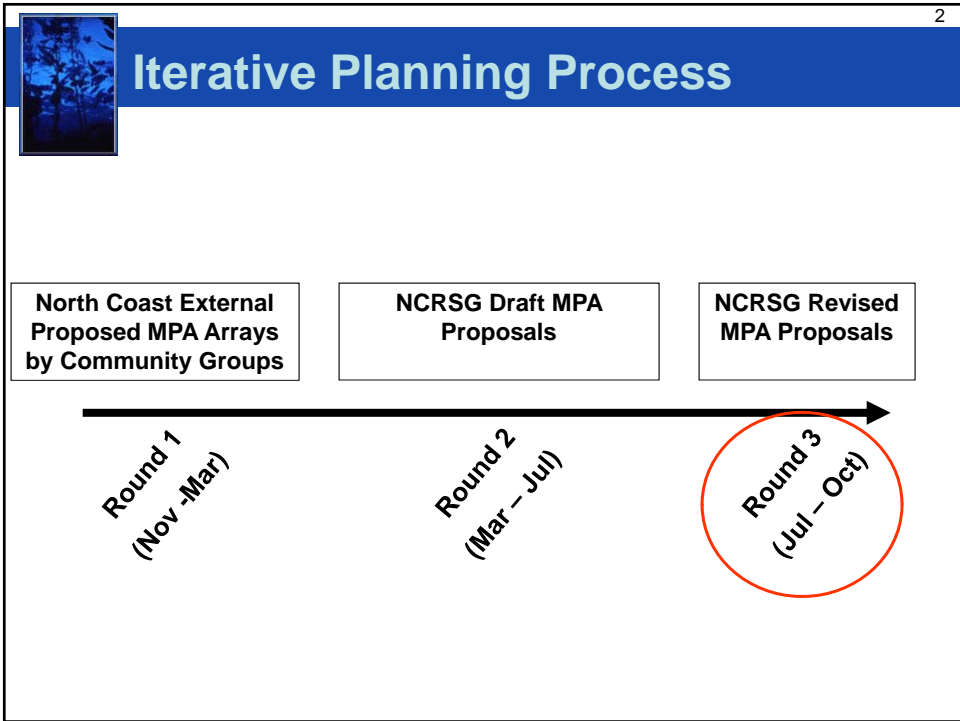
Marine Life Protection Act Initiative



Round 3 Process Design for the North Coast Study Region

Presentation to the MLPA North Coast Regional Stakeholder Group
July 29, 2010 • Fort Bragg, California

Dr. Eric Poncelet, Lead Facilitator • California MLPA Initiative
Dr. Satie Airamé, Science and Planning Advisor • California MLPA Initiative





Basis for Round 3 Process Design*

- Key MLPA Blue Ribbon Task Force (BRTF) guidance to date
 - BRTF adopted Round 3 process design at its July 21-22, 2010 meeting
- MLPA North Coast Regional Stakeholder Group (NCRSG) interests and preferences
- MLPA Initiative staff experience and professional judgment

** Consistent with Round 3 process design described in MLPA Initiative staff's July 16, 2010 memo to the BRTF*



Key Elements Round 3 Process Design

- NCRSG primarily work in full group setting toward cross-interest proposal
- Proposal must meet minimum science guidelines to the extent possible; specific focus on habitat replication and MPA spacing
- If NCRSG cannot come to agreement on single proposal, work to identify key areas of disagreement and create multiple proposals to address differences
- All NCRSG members be able to “live with” at least one Round 3 MPA proposal
- NCRSG members will have opportunity to express support for Round 3 MPA proposal(s) at Oct. 25-27 joint BRTF-NCRSG meeting



July 22 BRTF Guidance - General

1. NCRSG must consider all necessary means to improve proposal(s)' compliance with science guidelines; if NCRSG's Round 3 proposal(s) do not meet science guidelines to extent possible, recognizing that in some areas habitat distribution precludes meeting science guidelines, BRTF may be forced to consider modifying Round 3 proposal(s)
2. Continue to achieve strong cross-interest support and utilize local knowledge

Additional guidance: Incorporate key techniques (e.g., circle dialogue) to ensure all voices being heard



July 22 BRTF Guidance - Tribal Uses

3. Adhere to previous guidance to avoid tribal traditional, non-commercial uses, to extent possible
4. Where avoidance not possible, use of state marine conservation areas may be considered as shoreline ribbons to acknowledge and accommodate tribal uses that are protective of marine environment, recognizing that BRTF has been advised by California Department of Fish and Game that such uses will be available for all non-commercial users until relevant legislative action taken



July 22 BRTF Guidance - Tribal Uses

5. NCRSG should state intent on how traditional tribal uses should be acknowledged and accommodated within specific SMCAs
6. NCRSG encouraged to take into consideration tribal proposals to implement avoidance with regard to specific tribal uses

In addition, BRTF expressed strong support for efforts of tribes and tribal communities to work with California Department of Fish and Game and California State Legislature to gain resolution to concerns regarding MLPA



Staff Guidance Regarding Tribal Uses *

- For MPAs intended to accommodate tribal uses:
 - NCRSG to indicate whether *intent* is to allow ALL tribal uses
 - NCRSG to specify allowed species and methods to accommodate tribal uses, using best available information
 - Staff working with tribes and tribal communities to gather input on proposed uses for Round 2 MPAs; NCRSG should refer to input to help determine which species and methods of take to specify
- NCRSG specify for each proposed allowed use whether underlying *intent* is to:
 - Only accommodate traditional tribal uses, or
 - Accommodate traditional tribal uses, as well as recreational users

** from July 16, 2010 MLPA Initiative staff Round 3 process design memo*



Staff Guidance Regarding Tribal Uses

To increase information available to BRTF, MPAs intended to accommodate tribal uses to be evaluated as follows:

- Proposed allowed species and methods of take to be assigned an LOP consistent with SAT protocol
- MPAs intended as backbone, but with LOP below moderate high to accommodate tribal uses, evaluated in two different ways:
 1. Evaluate according to SAT evaluation methods
 2. Include MPAs with proposed uses assigned an LOP below moderate high if NCRSG only intends to accommodate traditional tribal uses in those MPAs



Key Sources of Information in Round 3

- Round 1 external MPA arrays and Round 2 draft MPA proposals
- BRTF and staff guidance, including California Department of Fish and Game and California Department of Parks and Recreation
- Rounds 1 and 2 evaluation results
- NCRSG members' local knowledge
- Additional ideas generated by NCRSG members between meetings
- Public input



Addressing Potential Process Challenges

- Round 3 process design - contingent on NCRSG making sufficient progress toward achieving charge
- Throughout Round 3, I-Team will assess if:
 1. Sufficient progress not being achieved in developing Round 3 MPA proposals
 2. Some NCRSG members not able to satisfy interests or contribute ideas toward proposal they can live with
- Facilitation team may modify Round 3 process design to ensure completion of NCRSG charge



Next Steps

- **July 29-30**
 - Round 2 evaluation results presented to NCRSG
 - NCRSG begins developing Round 3 MPA proposals
- **August 30 - September 1 (note potential addition of 3rd day)**
 - NCRSG finalizes Round 3 MPA proposals
- **October 13-14**
 - SAT reviews Round 3 evaluation results
- **October 25-27 (joint BRTF/NCRSG meeting)**
 - Round 3 evaluation materials presented to BRTF/NCRSG
 - BRTF finalizes recommendation to California Fish and Game Commission
- **December 15**
 - BRTF presents recommendation to commission