

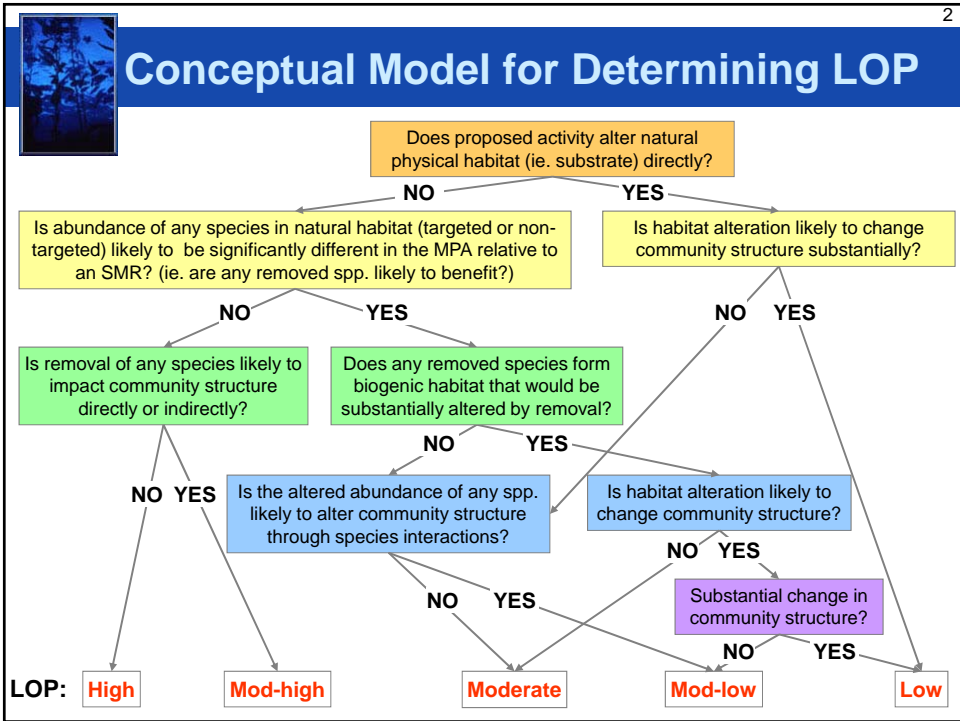
1

Marine Life Protection Act Initiative

Levels of Protection (LOPs) in the North Coast Study Region

Presentation to the MLPA Master Plan Science Advisory Team
July 28, 2010 • Teleconference/Webinar

Seth Miller, SAT Assistant • California MLPA Initiative





Constraints of the LOP Model

- Proposed activities must be identified by species (or species group) and method of take that may be regulated for all users
- Two categories of activities:
 - Commercial
 - Non-commercial (includes recreational, subsistence, and other non-commercial activities)
- To account for potential future use, LOP model assumes maximum possible harvest as permitted under regulation



Assigning LOPs for Round 3

- MLPA Master Plan Science Advisory Team (SAT) LOP Work Group has assigned LOPs to 24 species and species groups to date in north coast
- Request to assign additional LOPs to tribal activities during public comment at June 29-30 SAT meeting
- July 22 BRTF direction to regional stakeholder group in Round 3 to propose activities using species and method of take and indicate whether proposed activity intended to accommodate traditional, non-commercial tribal uses
- Consistent with previous rounds and study regions, SAT will assign LOPs to proposed activities as described by species and method of take



Outreach to Tribes & Tribal Communities

- North Coast tribes and tribal communities invited to share input on Round 2 draft MPA proposals and proposed allowed uses
- Staff developed list of potential non-commercial activities with 69 species and species groups, and common methods of take; also provided option to identify “other” species and methods of take
- References included north coast regional profile, California Department of Fish and Game staff expertise on common uses, and SAT member expertise



LOPs: Non-Commercial Activities

Staff identified all species and species groups on list of potential non-commercial activities for which LOPs have already been assigned:

Level of Protection	Number of Species	Percent of Species
High	2	3%
Moderate-high	3	4%
Moderate	7	10%
Moderate-low	9	13%
Low	6	9%
Not assigned	42	61%
Total	69	100%



Planning in Round 3

- If possible, regional stakeholder group to provide indication of any species (or species groups) and methods of take likely to be proposed for Round 3 MPAs not currently assigned an LOP
- Will give the SAT LOP Work Group time to review information about proposed activities and develop recommendations for LOPs



Edits to LOP Chapter

- Addition of text describing movements of redbill surfperch based on staff analysis of Oregon tagging study previously discussed by SAT
- Reorganization of LOP text for easier reference
 - Categorized into three groups: fish, invertebrates, algae
 - Alphabetized by common name within the three groups
- Addition of Appendix C2 with summary of relevant associated catch information for selected species